

JOIN US!

The Aurora Planning Commission has worked with FIVE RULE to prepare a proposed Future Land Use (FLU) Map.

- The proposed FLU map will be on display for public viewing and comment on **Wednesday, January 22 at City Hall**.
- Community residents are invited to view the proposed FLU map during an open house (come and go) at City Hall on Wednesday, January 22, 2-7 PM.
- A Consultant from FIVE RULE will be available to explain the proposed FLU map and answer questions.
- A formal presentation of the proposed FLU Map will also be provided from 5:30-6:00 PM that evening.

WHAT IS THE FUTURE LAND USE MAP?

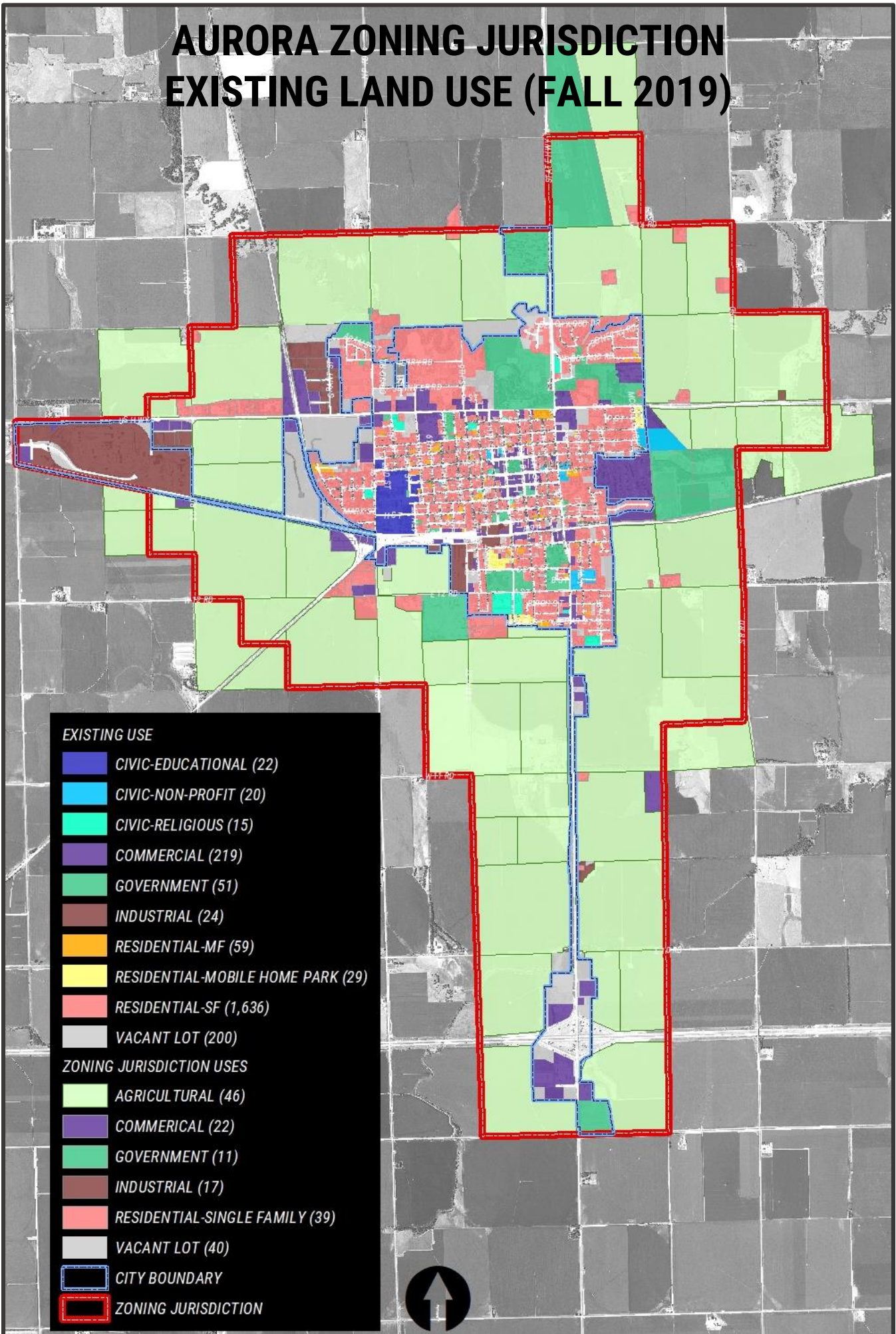
In the Fall of 2019, the City of Aurora contracted with FIVE RULE Rural Planning to update the City's Comprehensive Plan (Plan). The Plan guides the City Council's land use decisions over the next decade.

The map on the back of this flyer is the City's **Existing** Land Use (ELU) map. The comprehensive plan process consists of the Council considering what attributes of the ELU map should change and what attributes should remain the same over the next decade. The Council makes these considerations with input from the Community and guidance from the Planning Commission.

Those considerations are then represented on a second map, named the Future Land Use (FLU) Map. The FLU Map will be a crucial [decision making] page within the Plan.

The Plan serves as baseline guidance for land use decisions while the Zoning Ordinance serves as the local law regulating property development within the City of Aurora and its one-mile zoning jurisdiction. While the FLU Map is not the same as the City's Zoning Map, it will guide the City's zoning decisions. Once the Plan is complete, the City Zoning Ordinance will be updated to reflect the Plan.

AURORA ZONING JURISDICTION EXISTING LAND USE (FALL 2019)



EXISTING USE	
	CIVIC-EDUCATIONAL (22)
	CIVIC-NON-PROFIT (20)
	CIVIC-RELIGIOUS (15)
	COMMERCIAL (219)
	GOVERNMENT (51)
	INDUSTRIAL (24)
	RESIDENTIAL-MF (59)
	RESIDENTIAL-MOBILE HOME PARK (29)
	RESIDENTIAL-SF (1,636)
	VACANT LOT (200)
ZONING JURISDICTION USES	
	AGRICULTURAL (46)
	COMMERICAL (22)
	GOVERNMENT (11)
	INDUSTRIAL (17)
	RESIDENTIAL-SINGLE FAMILY (39)
	VACANT LOT (40)
	CITY BOUNDARY
	ZONING JURISDICTION

